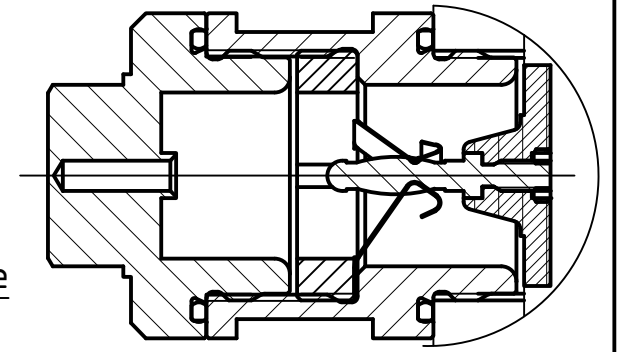
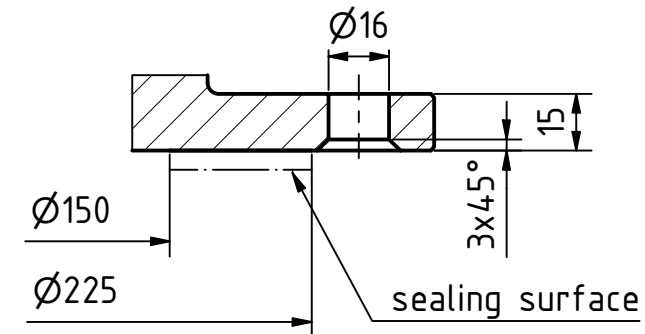
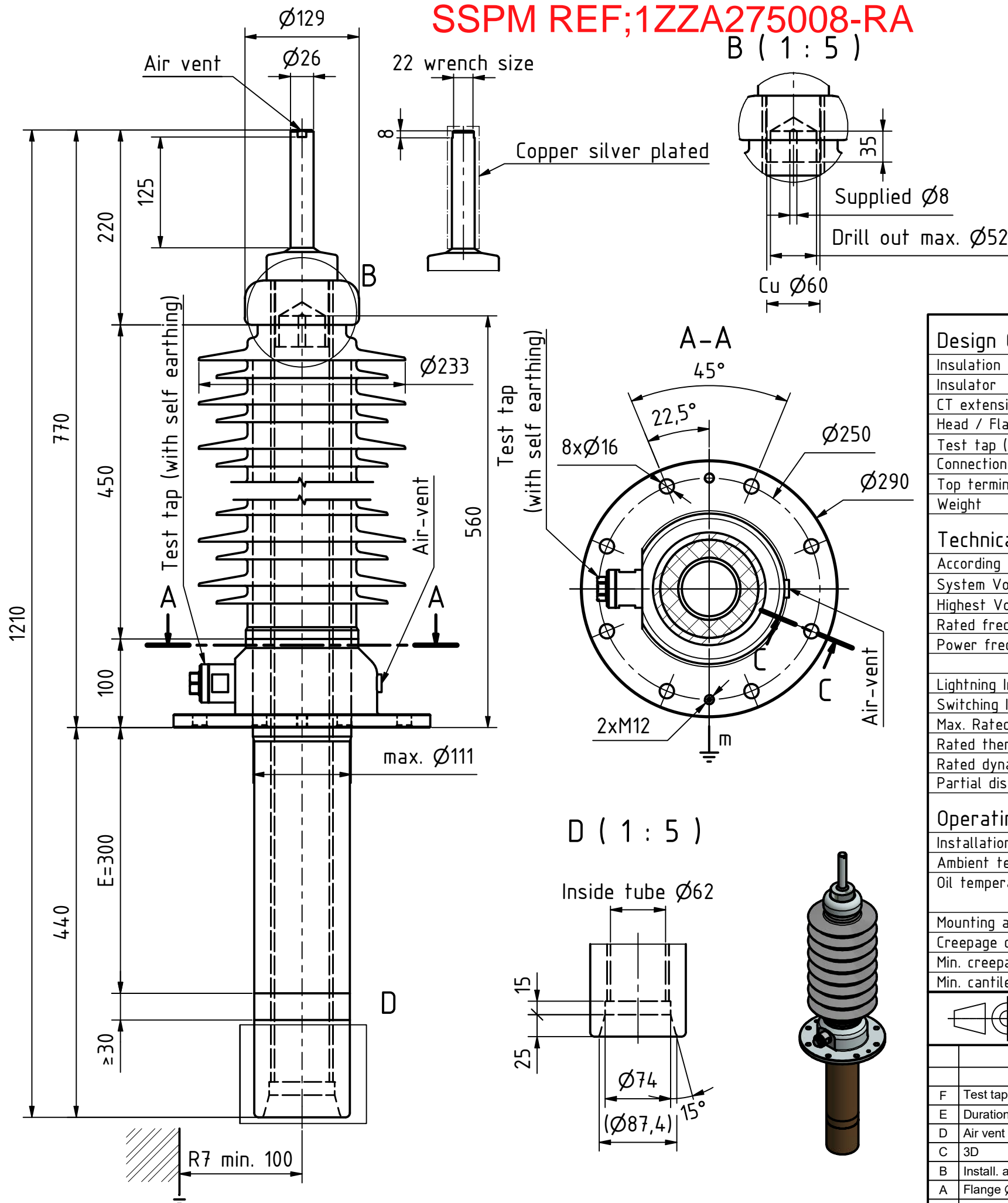


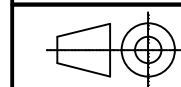
Test tap with  
self earthing



Insulation body		Resin Impregnated Paper (RIP)
Insulator		Silicone light grey
CT extension E		300 mm
Head / Flange		Made of corrosion free aluminium alloy
Test tap (AC test)	50Hz/1min.	2 kV
Connection to transformer winding		Draw lead (1000A)
Top terminal		B03=Cu-Ag
Weight		27 kg

According to		IEC 60137
System Voltage (Un)		33-44 kV
Highest Voltage (Um)		52 kV
Rated frequency (fr)		50 Hz
Power frequency voltage withstand (AC)	50Hz/1min.	dry 105 kV
		wet 95 kV
Lightning Impulse Withstand voltage (BIL)	1,2/50μs	250 kV
Switching Impulse (SIL)	250/2500μs	- kV
Max. Rated current (Ir)		1000 A
Rated thermal short-time current (Ith)	t=2s	25 kA
Rated dynamic current (Id)		63 kA
Partial discharge level	1.05 Um/ √3	≤5 pC

Installation altitude		1800m above sea level
Ambient temperature		-40 / +40 °C
Oil temperature	Max.	100 °C
	Max. Daily mean	90 °C
Mounting angle		0 - 90°
Creepage distance	Specific Creepage Distance	31mm/kV of highest voltage
Min. creepage distance		1612 mm
Min. cantilever test load	IEC 60137 class 2	2000N / 60s




Tol. as per DIN ISO 2768-1 (c)

PAGE: 1 / 1

FORMAT:	A3
---------	----

SCALE: 1:5

						DATE	NAME
F	Test tap with self earthing	10.06.2021	gbi		Check	26.11.2014	smu
E	Duration lth + diameter ø111	24.09.2019	enz		Appr.	10.06.2021	ymu
D	Air vent	06.02.2019	ymu		www.mgc.ch		
C	3D	05.07.2018	ata		 <b>MOSER GLASER</b> Current and voltage – our passion		
B	Install. altitude / BIL	13.06.2017	ymu				
A	Flange Ø16	19.12.2016	nst				
REV	DESCRIPTION	DATE	NAME				

DTOl oil-outdoor bushing - ESKOM

52kV / 1000A

E=300 / Ø290/250/111

DRAWING NO.:	
--------------	--

610.14.0089

REVISION:

—